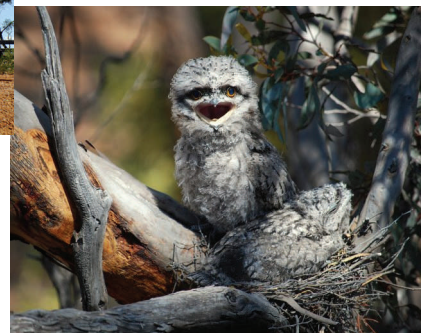


Strategic Plan 2010 2020



*Corrigin.....
A vibrant and thriving
rural community*



Council's Vision

A vibrant and thriving rural community.

Council's Mission

Work in partnership with the community to encourage growth and development, and foster quality lifestyle.

Council's Values

A Council and workforce dedicated to working together to provide quality services to our community by embracing the following values:



Council's Strategies

Key Result Area

Strategic Priorities

Community & Social

- Provide a range of quality cultural, recreational and sporting facilities and services to meet the needs of the community.
- Provide for the young, the aged and the disadvantaged
- Provide enhanced community health, wellbeing and safety

Business and Economic

- To assist with the economic Development of the district
- Provide for a high standard of transport infrastructure within the district
- Provide appropriate planning and regulatory measures to ensure orderly development of the district

Natural & Built Environment

- Manage and enhance our heritage and natural environment
- Provide the community with appropriate infrastructure that meets community expectations

Governance

- Provide for the good governance of the district
- Manage the Shire's resources to provide optimum benefit to the community
- Management of the organisation to achieve high levels of service and effectiveness
- Improve the level and quality of Customer Service

Strategic Action Plan 2010 – 2020

Strategic Priority 1

Provide a range of quality cultural, recreational and sporting facilities and services to meet the needs of the community.

- Swimming Pool Upgrade
- Swimming Club Shed
- New Recreation & Events Centre
- Replacement of Oval Fence
- Adventure Playground Upgrade
- War Memorial Upgrade
- Railway Precinct upgrade
- Murphy Street Playground upgrade
- Scenic Lookout upgrade
- Apex Park Development
- Promote Arts, Entertainment & Cultural developments
- Develop Verge, Parks & Gardens Asset Management Plan
- Develop Community Development Strategies
- Revise Sports Precinct Master Plan (current matrix)
- Expand library services

Strategic Priority 3

Provide enhanced community health, wellbeing and safety

- Medical Centre Upgrade
- Support & encourage high quality delivery of health services
- Progress the Eastern Wheatbelt Primary Care Project
- Support General Practitioner services for Corrigin
- Review Local Emergency Management arrangements
- Establish Community Safety & Crime Prevention partnerships
- Upgrade Aerodrome facilities
- Emergency services

Strategic Priority 2

Provide for the young, the aged and the disadvantaged

- Prepare a strategy to assist the Aged
- Prepare a strategy for our Youth
- Support Child Care programs
- Child Care Centre Expansion
- Incorporate Disability access & Inclusion philosophies into asset projects
- Assist in the enhancement of Education services within the district.
- Provide up to date information technology services to the public

Strategic Priority 4

To assist with the economic development of the district

- Woglin Subdivision
- New Information Bay
- New Entrance Statements
- Main Street redevelopment
- Develop an Economic Development Strategy
- Implement Town Beautification Plan
- Regional hub
- Support tourism attraction strategies

Strategic Action Plan 2010 – 2020

Strategic Priority 5

Provide for a high standard of transport infrastructure within the district

- Program for progressive improvement of the shire road network
- Program for progressive improvements for the shire footpath network
- Upgrade Aerodrome facilities

Strategic Priority 6

Manage and enhance our heritage and natural environment

- Reserve rehabilitation
- Progress ‘towards zero Waste’ planning
- Develop environmental management plans for Shire managed reserves
- Develop Water Management Strategy
- Develop Salinity Management Strategy
- Review & Maintain up to date Municipal heritage inventory
- Expand Heritage Trails & signage
- Understand & improve Council’s current carbon emissions
- Embrace energy saving initiatives

Strategic Priority 7

Provide the community with appropriate infrastructure that meets community expectations

- Resource Centre Storage
- Records Storage facility
- Admin Auto Doors
- Windmill building air conditioning
- CWA Upgrade
- Town Hall Upgrade
- Day Care Roof replacement
- Caravan Park Fence replacement
- New Caravan Park Ablutions
- Cemetery Entry Pavilion
- Replace Rotary Park Toilets
- Upgrade Walton Street Toilets
- Develop asset management plan
- Develop Cemetery Management Plan

Strategic Priority 8

Provide appropriate planning and regulatory measures to ensure orderly development of the district

- Review Town Planning Scheme

Strategic Action Plan 2010 – 2020

Strategic Priority 9

Provide for the good governance of the district

- Reduce Council numbers from 9 to 7
- Progress regional cooperation
- Develop and Maintain Councillors Skills
- Provide accountable and transparent governance
- Review size, shape & sustainability of Council

Strategic Priority 10

Manage the Shire's resources to provide optimum benefit to the community

- Produce and maintain 5 year financial plan
- Examine alternative Revenue Sources
- Develop Cost Reduction Strategies
- Oppose Cost Shifting by State / Federal Government

Strategic Priority 11

Management of the organisation to achieve high levels of service and effectiveness

- Develop & Maintain Councils human resources
- Develop an Occupational Health & Safety plan to ensure a safe and healthy workforce
- Maintain high standard of professional and service
- Develop staff attraction and retention strategies
- Maintain and develop staff housing stocks

Strategic Priority 12

Improve the level and quality of Customer Service

- Adopt a Customer Service Charter
- Provide quality information to customers